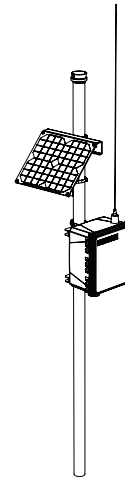


RemoteCOM Telemetry System
(RC50 RemoteCOM Unit / RC51 Satellite Base Station)



SatCOM Telemetry System
(RC52 SatCOM Telemetry System)

The McCrometer RemoteCONNECT™ Telemetry System is a wireless data collection system designed to work with flowmeters and Ag water management sensors such as water level, water salinity, soil moisture, and rain gauge. The RemoteCONNECT System enhances irrigation by delivering up-to-date data via the Internet. This data can be used by state organizations, water conservancy districts, irrigators, and researchers.

RC50 / RC51 RemoteCOM Telemetry System

OPERATING MODES

Timed Transmissions: Sensor data values are reported at user programmable time intervals.

Event Mode Transmissions: Report of any digital input is generated upon a state change.

Digital Input: Event trigger or programmed as a pulse counter.

Analog Sensor Inputs: Four configurable analog 0-5V, 0-1mA, 0-20mA, and 4-20mA. Signal conditioning is available for one channel to accommodate mV signals and battery voltage. Additional analog inputs available as an option.

Locations:

RC50 RemoteCOM meter node within two to five miles line of sight to RC51 Satellite Base Station.

RC51 Any location with an unobstructed view of the sky.

Power Supply: Solar or 110VAC supply, both with battery backup. 5 year battery life.

Relative Humidity: 0 to 100% non-condensing.

Operating Temperature Range: -40° to 140° F (-40° to 60° C).

Enclosure: NEMA 4 with hinged door, polycarbonate.

RC52 SatCOM Telemetry System

OPERATING MODES

Timed Transmissions: Sensor data values are reported at user programmable time intervals.

Event Mode Transmissions: Report of any digital input is generated upon a state change.

Digital Input: Event trigger or programmed as a pulse counter.

Analog Sensor Inputs: Four configurable analog 0-5V, 0-1mA, 0-20mA, and 4-20mA. Signal conditioning is available for one channel to accommodate mV signals and battery voltage. Additional analog inputs available as an option.

Control Output: Three controls available per SatCOM (12VDC 100mA).

Locations: Any location with an unobstructed view of the sky.

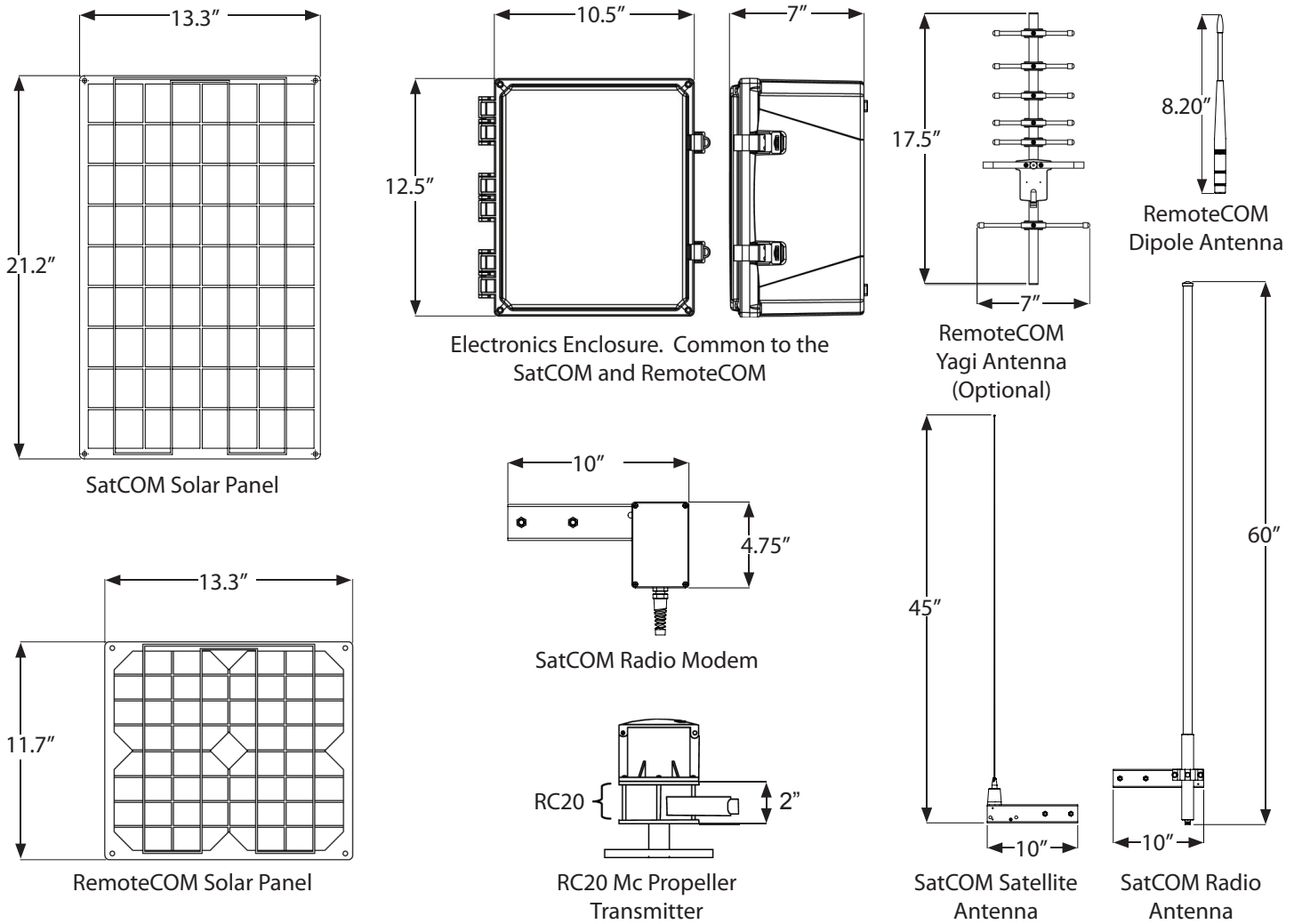
Power Supply: Solar or 110VAC supply, both with battery backup. Five year battery life.

Relative Humidity: 0 to 100% non-condensing.

Operating Temperature Range: -40° to 140° F (-40° to 60° C).

Enclosure: NEMA 4 with hinged door, polycarbonate.

Dimensions



RemoteCONNECT Part Configurations

Item No. Description

RC50 RemoteCOM Unit (Requires RC51 Satellite Base Station)

Solar Powered
Solar Powered for Cold Weather Climates
Powered by 110VAC with battery backup

Antenna (Feature for Model RC50)

Dipole (Standard)
Yagi with 3' Cable Assembly
Yagi with 5' Cable Assembly
Yagi with 10' Cable Assembly
Yagi with 20' Cable Assembly

RC51 SatCOM Satellite Base Station

Solar Powered
Solar Powered for Cold Weather Climates
Powered by 110VAC with battery backup

Item No. Description

RC52 SatCOM Telemetry System

Solar Powered
Solar Powered for Cold Weather Climates
Powered by 110VAC with battery backup

RC20 Mc Propeller Transmitter For RC5x Series

Options

Cable 4 wire (buriable)
Cable, Hardware, and Buriable Conduit
Additional Analog Inputs
Additional Control Outputs
Ag Water Management Sensors (See Sensor List)



3255 WEST STETSON AVENUE • HEMET, CALIFORNIA 92545 USA www.mccrometer.com
 TEL: 951-652-6811 • 800-220-2279 • FAX: 951-652-3078 Printed In The U.S.A. Lit. # 30120-05 Rev. 1.0/04-10

Copyright © 2010 McCrometer, Inc. All printed material should not be changed or altered without permission of McCrometer. Any published technical data and instructions are subject to change without notice. Contact your McCrometer representative for current technical data and instructions.