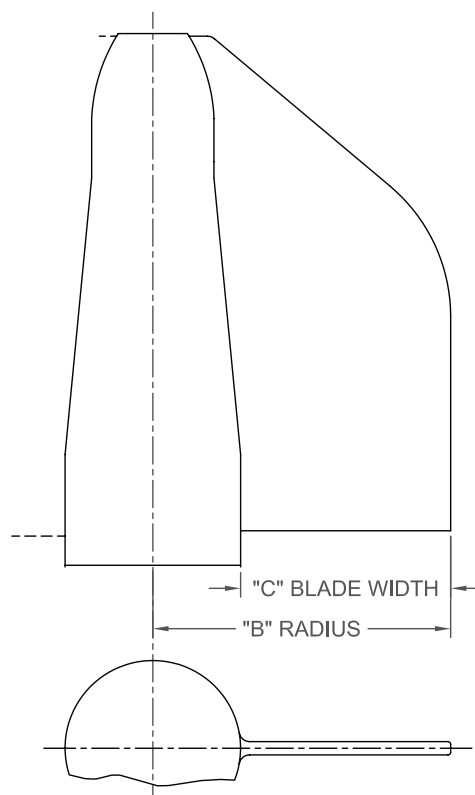
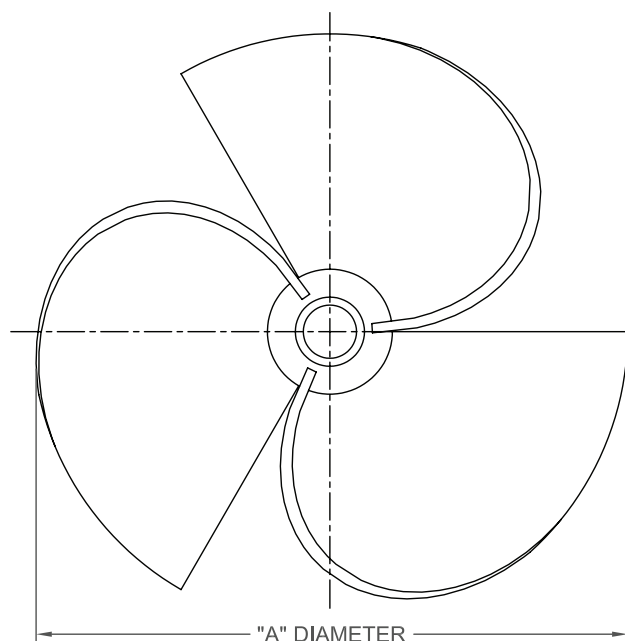




WATER SPECIALTIES 2" - 20" STD. PROPELLER SIZES



PART NUMBER	METER SIZE	"A" DIA.	"B" RADIUS	"C" BLADE WIDTH	BLADE CLEARANCE FOR STD. PIPE
3-2425-2.875	2" & 3"	2 7/8	1 7/16	7 1/6	1/16
3-2425-3.5	4" L.P.	3 1/2	1 3/4	3/4	1/4
3-2425-3.75-P	4"	3 3/4	1 7/8	7/8	1/8
3-2425-4.5-P	6" L.P.	4 1/2	2 1/4	1 1/4	3/4
3-2425-5.25-P	6" M.L. OR 8" L.P.	5 1/4	2 5/8	1 5/8	3/8
3-2425-5.5-P	6" M.L. LOW VELOCITY	5 1/2	2 3/4	1 3/4	1/2
3-2425-7.0-P	8" M.L. OR 10" L.P.	7	3 1/2	2 1/2	1/2
3-2425-7.375-P	8" M.L. LOW VELOCITY	7 3/8	3 11/16	2 11/16	.110
3-2425-8.625	10" M.L. OR 12" L.P.	8 5/8	4 5/16	3 5/16	11/16
3-2425-9.375-P	10" M.L. LOW VELOCITY	9 3/8	4 11/16	3 11/16	.298
3-2425-10.0-P	12" M.L. OR 14" L.P.	10	5	4	1
3-2425-11.0-P	12" M.L. LOW VELOCITY	11	5 1/2	4 1/2	1 1/4
3-2425-11.0-P	14" M.L. OR 16" L.P.	11	5 1/2	4 1/2	1 1/4
3-2425-12.0-P	16" M.L. OR 18" L.P.	12	6	5	1 3/4
3-2425-14.0-P	18"-54" M.L. OR 20" L.P.	14	7	6	1 3/4 & 2 3/4



McCROMETER
www.mccrometer.com

3255 WEST STETSON AVENUE • HEMET, CALIFORNIA 92545 USA
TEL: 951-652-6811 • 800-220-2279 • FAX: 951-652-3078 Printed In The U.S.A

Copyright © 2009 McCrometer, Inc. All printed material should not be changed or altered without permission of McCrometer. Any published technical data and instructions are subject to change without notice. Contact your McCrometer representative for current technical data and instructions.