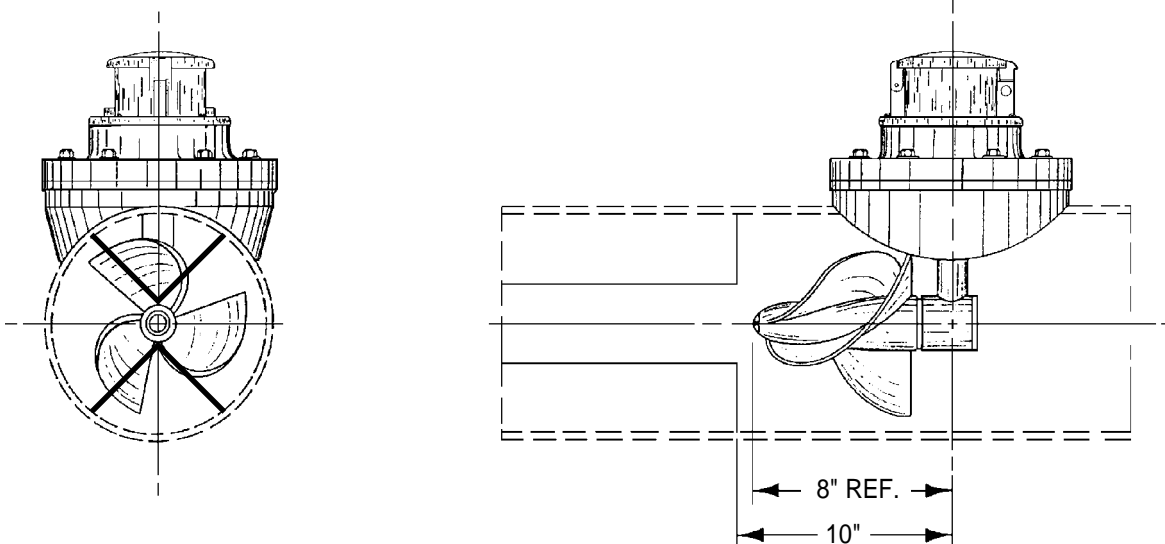




3"-12" ML METERS WELD IN STRAIGHTENING VANE INSTALLATION INSTRUCTIONS



WELD-IN STRAIGHTENING VANES should be installed inside the pipe in the following manner:

- A. HOLD the vanes on the inside of the pipe with the trailing edge of the vane 10" upstream from the meter center line as indicated on the drawing above. Vanes must be parallel to the center line of the pipe and should be equally spaced at the top and bottom of pipe (see diagram at upper left).
- B. TACK the vanes in place and double check the distance from the meter center line to the trailing edge of the vanes.
- C. WELD the vanes in place when you are certain they are positioned properly and are parallel with the flow.
- D. METER ASSEMBLY can now be attached to the tube. Make certain that the meter head gasket is in place before securing the meter head bolts. (see meter service manual).